

# PCE

Connection  
to the future



**Product overview**  
**INDUSTRIAL PLUGS AND SOCKETS**  
MADE IN AUSTRIA



PCE is a world leader in the development and production of industrial plugs and sockets with an export share of over 80%! Since its founding in 1973 the company continued to develop and to become an international group of companies.

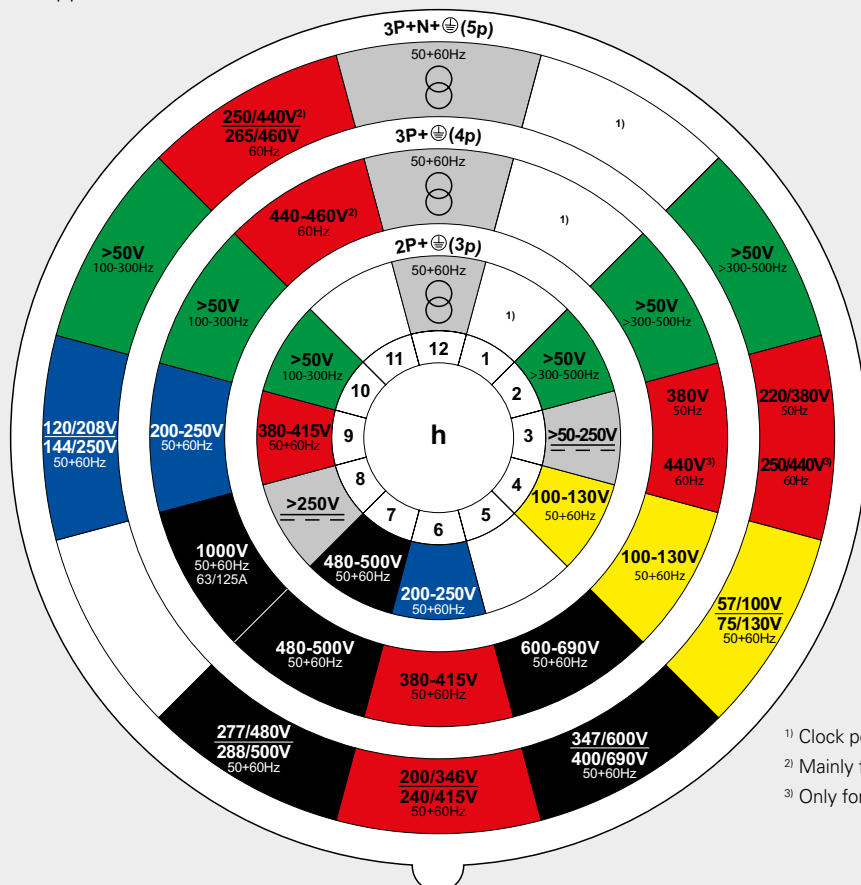
PCE offers a wide range of high quality products for various applications in the electrical installation sector. The range is constantly updated and currently includes approximately 22.000 items. In addition to our standard products PCE is able to produce customer-specific configurations on modern injection molding and metal processing plants within a few days.

High level of quality (ISO 9001:2015 Certification), flexibility and constant innovation of products and processes are among the most important factors of our successful customer-oriented strategy. Speed is top priority! Rapid delivery times and reliability through efficient manufacturing methods and uncomplicated order processing have been appreciated by our customers for years.

Continuous innovation of products and processes paired with the close cooperation with our customers makes PCE a strong, worldwide partner for the professional use of industrial plugs and sockets in electrical installation!

## INTERNATIONAL RATING ACC. TO IEC 60309-2 – SERIE I

for appliances >50V

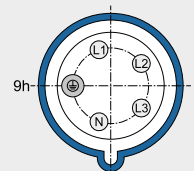
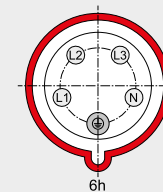


Position of the earthing contact.  
View: frontside socket or connector

Example:

400V 5p = 6h






230V 5p = 9h



- <sup>1)</sup> Clock position not standardized and free for use for special applications
- <sup>2)</sup> Mainly for ship installations
- <sup>3)</sup> Only for refrigerated containers

Amp.	Poles	110V~	230V~	400V~
		50/60Hz 4h	50/60Hz 3p=6h 4p+5p=9h	50/60Hz 3p=9h 4p+5p=6h
		Cat.No.	Cat.No.	Cat.No.

## CEE Plugs and connectors

16	5	0153-4	0153-9	0153-6	<b>Plug IP44/54</b> <b>GRIP</b> <ul style="list-style-type: none"> <li>with screw terminals</li> <li>housing material: 2K (PA6/TPE)</li> <li>contacts: brass</li> </ul> <b>IP44/54</b>	
32	5	0253-4	0253-9	0253-6		
16	5	0153-4TT	0153-9TT	0153-6TT	<b>Plug IP44/54</b> <b>GRIP TT</b> <ul style="list-style-type: none"> <li>screwless connection technology</li> <li>housing material: 2K (PA6/TPE)</li> <li>contacts: brass</li> </ul> <b>IP44/54</b>	
32	5	0253-4TT	0253-9TT	0253-6TT		
16	5	2153-4	2153-9	2153-6	<b>Connector IP44/54</b> <b>GRIP</b> <ul style="list-style-type: none"> <li>with screw terminals</li> <li>housing material: 2K (PA6/TPE)</li> <li>contacts: brass</li> </ul> <b>IP44/54</b>	
32	5	2253-4	2253-9	2253-6		
16	5	2153-4TT	2153-9TT	2153-6TT	<b>Connector IP44/54</b> <b>GRIP TT</b> <ul style="list-style-type: none"> <li>screwless connection technology</li> <li>housing material: 2K (PA6/TPE)</li> <li>contacts: brass</li> </ul> <b>IP44/54</b>	
32	5	2253-4TT	2253-9TT	2253-6TT		
16	5			70153-6	<b>Phase inverter plug IP44/54</b> <b>GRIP</b> <ul style="list-style-type: none"> <li>with screw terminals</li> <li>housing material: 2K (PA6/TPE)</li> <li>contacts: nickel-plated</li> </ul> <b>IP44/54</b>	
32	5			70253-6		
16	5			70153-6TT	<b>Phase inverter plug IP44/54</b> <b>GRIP TT</b> <ul style="list-style-type: none"> <li>L1, N, PE = screwless connection technology</li> <li>L2, L3 = screw terminals</li> <li>housing material: 2K (PA6/TPE)</li> <li>contacts: nickel-plated</li> </ul> <b>IP44/54</b>	
32	5			70253-6TT		

Central cable gland with internal strain relief for all common cable types, tool-free and captive

Cover operation ergonomically optimized for a convenient single-handed operation

New holding device with integrated retaining groove - multi usage



Rubberized grip area (2K) ergonomically shaped for secure hold

Closed multi-ramp locking with proven opening mechanism

Increased protective strap for safe handling when plugging in and pulling out

# CEE Plugs

## Plug IP44 SHARK

- with screw terminals
- with Shark cable gland

IP44



Amp.	Poles	110V~	230V~	400V~
		50/60Hz 4h	50/60Hz 3p=6h 4p+5p=9h	50/60Hz 3p=9h 4p+5p=6h
		Cat.No.	Cat.No.	Cat.No.
16	3	013-4	<b>013-6</b>	013-9
16	4	014-4	014-9	<b>014-6</b>
16	5	015-4	015-9	<b>015-6</b>
32	3	023-4	<b>023-6</b>	023-9
32	4	024-4	024-9	<b>024-6</b>
32	5	025-4	025-9	<b>025-6</b>

## Plug IP44 SHARK TT

- screwless connection technology
- with Shark cable gland

IP44



**TURBO**  
TERMINAL<sup>clicks</sup>

16	3	013-4TT	<b>013-6TT</b>	013-9TT
16	4	014-4TT	014-9TT	<b>014-6TT</b>
16	5	015-4TT	015-9TT	<b>015-6TT</b>
32	3	023-4TT	<b>023-6TT</b>	023-9TT
32	4	024-4TT	024-9TT	<b>024-6TT</b>
32	5	025-4TT	025-9TT	<b>025-6TT</b>

## Plug IP67 SHARK

- with screw terminals
- with Shark cable gland

IP66/67



16	3	0132-4	<b>0132-6</b>	0132-9
16	4	0142-4	0142-9	<b>0142-6</b>
16	5	0152-4	0152-9	<b>0152-6</b>
32	3	0232-4	<b>0232-6</b>	0232-9
32	4	0242-4	0242-9	<b>0242-6</b>
32	5	0252-4	0252-9	<b>0252-6</b>

## Plug IP67 SHARK TT

- screwless connection technology
- with Shark cable gland

IP66/67



**TURBO**  
TERMINAL<sup>clicks</sup>

16	3	0132-4TT	<b>0132-6TT</b>	0132-9TT
16	4	0142-4TT	0142-9TT	<b>0142-6TT</b>
16	5	0152-4TT	0152-9TT	<b>0152-6TT</b>
32	3	0232-4TT	<b>0232-6TT</b>	0232-9TT
32	4	0242-4TT	0242-9TT	<b>0242-6TT</b>
32	5	0252-4TT	0252-9TT	<b>0252-6TT</b>

## Plug IP66/67 POWER TWIST

- contact frame with screws
- nickel-plated contacts
- with Twist cable gland
- with pilot contact

IP66/67



**POWER**  
**TWIST**

63	3	033-4	<b>033-6</b>	033-9
63	4	034-4	034-9	<b>034-6</b>
63	5	035-4	035-9	<b>035-6</b>
125	3	043-4	<b>043-6</b>	043-9
125	4	044-4	044-9	<b>044-6</b>
125	5	045-4	045-9	<b>045-6</b>

## Angled plug IP44 TWIST

- with screw terminals
- with Twist cable gland

IP44 (IP67 on request)



16	3	8013-4	<b>8013-6</b>	8013-9
16	4	8014-4	8014-9	<b>8014-6</b>
16	5	8015-4	8015-9	<b>8015-6</b>
32	3	8023-4	<b>8023-6</b>	8023-9
32	4	8024-4	8024-9	<b>8024-6</b>
32	5	8025-4	8025-9	<b>8025-6</b>

## Angled plug IP44 TWIST TT

- screwless connection technology
- with Twist cable gland

IP44 (IP67 on request)



**TURBO**  
TERMINAL<sup>clicks</sup>

16	3	8013-4TT	<b>8013-6TT</b>	8013-9TT
16	4	8014-4TT	8014-9TT	<b>8014-6TT</b>
16	5	8015-4TT	8015-9TT	<b>8015-6TT</b>
32	3	8023-4TT	<b>8023-6TT</b>	8023-9TT
32	4	8024-4TT	8024-9TT	<b>8024-6TT</b>
32	5	8025-4TT	8025-9TT	<b>8025-6TT</b>

## Phase inverter plug IP44 SHARK

- with screw terminals
- nickel-plated contacts

IP44, IP66/67



IP44	16	4		7014-9	7014-6
IP66/67	16	4		70142-9	70142-6
IP44	16	5			<b>7015-6</b>
IP66/67	16	5			70152-6
IP44	32	4		7024-9	7024-6
IP66/67	32	4		70242-9	70242-6
IP44	32	5			<b>7025-6</b>
IP66/67	32	5			70252-6

Amp.	Poles	110V~	230V~	400V~
		50/60Hz 4h	50/60Hz 3p=6h 4p+5p=9h	50/60Hz 3p=9h 4p+5p=6h
		Cat.No.	Cat.No.	Cat.No.
16	3	513-4	<b>513-6</b>	513-9
16	4	514-4	514-9	<b>514-6</b>
16	5	515-4	515-9	<b>515-6</b>
32	3	523-4	<b>523-6</b>	523-9
32	4	524-4	524-9	<b>524-6</b>
32	5	525-4	525-9	<b>525-6</b>

### Wall mounted plug IP44

- with screw terminals
- top (M25) or rear entry

IP44 (IP67 on request)



16	3	9513-4	<b>9513-6</b>	9513-9
16	4	9514-4	9514-9	<b>9514-6</b>
16	5	9515-4	9515-9	<b>9515-6</b>
32	3	9523-4	<b>9523-6</b>	9523-9
32	4	9524-4	9524-9	<b>9524-6</b>
32	5	9525-4	9525-9	<b>9525-6</b>

### Wall mounted plug IP44

- with screw terminals
- for wiring through
- top (M25), 2x bottom (M25) or rear entry

IP44

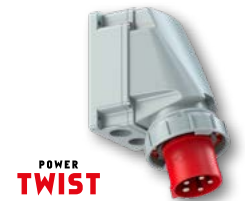


63	3	533-4	<b>533-6</b>	533-9
63	4	534-4	534-9	<b>534-6</b>
63	5	535-4	535-9	<b>535-6</b>

### Wall mounted plug IP66/67 POWER TWIST

- top (M40), bottom (2xM32) or rear entry
- nickel-plated contacts, with pilot contact
- waterproof cover and cable-glands are available

IP66/67



125	3	543-4	<b>543-6</b>	543-9
125	4	544-4	544-9	<b>544-6</b>
125	5	545-4	545-9	<b>545-6</b>

### Wall mounted plug IP66/67 POWER TWIST

- top (M63), bottom (2xØ40) or rear entry
- nickel-plated contacts, with pilot contact
- waterproof cover and cable-glands are available

IP66/67



flange: 70x70; fixing center 56x56

16	3	613-4	<b>613-6</b>	613-9
16	4	614-4	614-9	<b>614-6</b>
16	5	615-4	615-9	<b>615-6</b>
32	3	623-4	<b>623-6</b>	623-9
32	4	624-4	624-9	<b>624-6</b>
32	5	625-4	625-9	<b>625-6</b>

### Flanged plug straight IP44

- with screw terminals

IP44

other flange sizes, screwless terminals or IP67 on request



flange: 100x100; fixing center 80x80

63	3	633-4	<b>633-6</b>	633-9
63	4	634-4	634-9	<b>634-6</b>
63	5	635-4	635-9	<b>635-6</b>

### Flanged plug straight IP66/67 POWER TWIST

- nickel-plated contacts, with pilot contact
- waterproof cover and cable-glands are available

IP66/67 (IP44 on request)



flange: 120x120; fixing center 100x100

125	3	643-4	<b>643-6</b>	643-9
125	4	644-4	644-9	<b>644-6</b>
125	5	645-4	645-9	<b>645-6</b>

### Flanged plug angled IP66/67 POWER TWIST

- nickel-plated contacts, with pilot contact
- waterproof cover and cable-glands are available

IP66/67



flange: 100x112; fixing center 80x88

63	3	733-4	<b>733-6</b>	733-9
63	4	734-4	734-9	<b>734-6</b>
63	5	735-4	735-9	<b>735-6</b>

flange: 120x130; fixing center 100x108

125	3	743-4	<b>743-6</b>	743-9
125	4	744-4	744-9	<b>744-6</b>
125	5	745-4	745-9	<b>745-6</b>

### Flanged plug angled IP44 TWIST

- with screw terminals

IP44 (IP67 on request)



# CEE Connectors and sockets

## Connector IP44 SHARK

- with screw terminals
- with Shark cable gland

IP44



Amp.	Poles	110V~	230V~	400V~
		50/60Hz 4h	50/60Hz 3p=6h 4p+5p=9h	50/60Hz 3p=9h 4p+5p=6h
		Cat.No.	Cat.No.	Cat.No.
16	3	213-4	<b>213-6</b>	213-9
16	4	214-4	214-9	<b>214-6</b>
16	5	215-4	215-9	<b>215-6</b>
32	3	223-4	<b>223-6</b>	223-9
32	4	224-4	224-9	<b>224-6</b>
32	5	225-4	225-9	<b>225-6</b>

## Connector IP44 SHARK TT

- screwless connection technology
- with Shark cable gland

IP44



16	3	213-4TT	<b>213-6TT</b>	213-9TT
16	4	214-4TT	214-9TT	<b>214-6TT</b>
16	5	215-4TT	215-9TT	<b>215-6TT</b>
32	3	223-4TT	<b>223-6TT</b>	223-9TT
32	4	224-4TT	224-9TT	<b>224-6TT</b>
32	5	225-4TT	225-9TT	<b>225-6TT</b>

## Connector IP66/67 SHARK

- with screw terminals
- with Shark cable gland

IP66/67



16	3	2132-4	<b>2132-6</b>	2132-9
16	4	2142-4	2142-9	<b>2142-6</b>
16	5	2152-4	2152-9	<b>2152-6</b>
32	3	2232-4	<b>2232-6</b>	2232-9
32	4	2242-4	2242-9	<b>2242-6</b>
32	5	2252-4	2252-9	<b>2252-6</b>

## Connector IP66/67 SHARK TT

- screwless connection technology
- with Shark cable gland

IP66/67



16	3	2132-4TT	<b>2132-6TT</b>	2132-9TT
16	4	2142-4TT	2142-9TT	<b>2142-6TT</b>
16	5	2152-4TT	2152-9TT	<b>2152-6TT</b>
32	3	2232-4TT	<b>2232-6TT</b>	2232-9TT
32	4	2242-4TT	2242-9TT	<b>2242-6TT</b>
32	5	2252-4TT	2252-9TT	<b>2252-6TT</b>

## Connector IP66/67 POWER TWIST

- contact frame with screws
- with lamellar contact
- with Twist cable gland

IP66/67



63	3	233-4	<b>233-6</b>	233-9
63	4	234-4	234-9	<b>234-6</b>
63	5	235-4	235-9	<b>235-6</b>
125	3	243-4	<b>243-6</b>	243-9
125	4	244-4	244-9	<b>244-6</b>
125	5	245-4	245-9	<b>245-6</b>

## Wall socket IP44

- with screw terminals
- top (M25) or rear entry

IP44



16	3	113-4	<b>113-6</b>	113-9
16	4	114-4	114-9	<b>114-6</b>
16	5	115-4	115-9	<b>115-6</b>
32	3	123-4	<b>123-6</b>	123-9
32	4	124-4	124-9	<b>124-6</b>
32	5	125-4	125-9	<b>125-6</b>

## Wall socket IP44 TT

- screwless connection technology
- top (M25) or rear entry

IP44



16	3	113-4TT	<b>113-6TT</b>	113-9TT
16	4	114-4TT	114-9TT	<b>114-6TT</b>
16	5	115-4TT	115-9TT	<b>115-6TT</b>
32	3	123-4TT	<b>123-6TT</b>	123-9TT
32	4	124-4TT	124-9TT	<b>124-6TT</b>
32	5	125-4TT	125-9TT	<b>125-6TT</b>

## Wall socket IP67

- with screw terminals
- top (M25) or rear entry

IP67



16	3	1132-4	<b>1132-6</b>	1132-9
16	4	1142-4	1142-9	<b>1142-6</b>
16	5	1152-4	1152-9	<b>1152-6</b>
32	3	1232-4	<b>1232-6</b>	1232-9
32	4	1242-4	1242-9	<b>1242-6</b>
32	5	1252-4	1252-9	<b>1252-6</b>

Amp.	Poles	110V~	230V~	400V~
		Cat.No.	Cat.No.	Cat.No.
		50/60Hz 4h	50/60Hz 3p=6h 4p+5p=9h	50/60Hz 3p=9h 4p+5p=6h

63	3	133-4	133-6	133-9
63	4	134-4	134-9	134-6
63	5	135-4	135-9	135-6

### Wall socket IP66/67 POWER TWIST

POWER TWIST

- top (M40), bottom (2xM32) or rear entry
- with lamellar contact
- to order with pilot contact please add a "5" e.g.: 1335-6

IP66/67



63	3	1337-4	1337-6	1337-9
63	4	1347-4	1347-9	1347-6
63	5	1357-4	1357-9	1357-6
125	3	143-4	143-6	143-9
125	4	144-4	144-9	144-6
125	5	145-4	145-9	145-6

### Wall socket IP66/67 POWER TWIST

POWER TWIST

- 63A: top (M40), bottom (2xØ40) or rear entry
- 125A: top (M63), bottom (2xØ40) or rear entry
- with lamellar contact
- to order with pilot contact please add a "5" e.g.: 13575-6

IP66/67



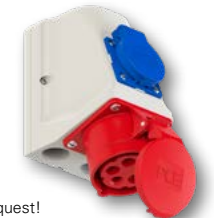
16	3		9213-6	
16	4		9214-9	9214-6
16	5			9215-6
32	3		9223-6	
32	4		9224-9	9224-6
32	5			9225-6

### Wall socket COMBO IP44

- with integrated socket\*, connecting terminals up to 10mm<sup>2</sup>, ready wired
- for Combo-wall socket 32A the socket (DIN 49440) is protected by fuse (10A slow)

IP44

\* conforming to Austrian/German system, other versions on request!



#### flange: 75x75; fixing center 60x60

16	3	313-4f7	313-6f7	313-9f7
16	4	314-4f7	314-9f7	314-6f7
16	5	315-4f7	315-9f7	315-6f7
32	3	323-4f7	323-6f7	323-9f7
32	4	324-4f7	324-9f7	324-6f7
32	5	325-4f7	325-9f7	325-6f7

### Flanged socket straight IP44

- with screw terminals
- other versions on request

IP44

IP44/IP54 (16A 3p, 16A 5p, 32A 5p)



#### flange: 75x75; fixing center 60x60

16	3	313-4TTf7	313-6TTf7	313-9TTf7
16	4	314-4TTf7	314-9TTf7	314-6TTf7
16	5	315-4TTf7	315-9TTf7	315-6TTf7
32	3	323-4TTf7	323-6TTf7	323-9TTf7
32	4	324-4TTf7	324-9TTf7	324-6TTf7
32	5	325-4TTf7	325-9TTf7	325-6TTf7

### Flanged socket straight IP44 TT

TURBO TERMINAL<sup>clicks</sup>

- screwless connection technology
- other versions on request

IP44

IP44/IP54 (16A 3p, 16A 5p, 32A 5p)



#### flange: 75x75; fixing center 60x60

16	3	3132-4	3132-6	3132-9
16	4	3142-4	3142-9	3142-6
16	5	3152-4	3152-9	3152-6
32	3	3232-4	3232-6	3232-9
32	4	3242-4	3242-9	3242-6
32	5	3252-4	3252-9	3252-6

### Flanged socket straight IP67

- with screw terminals
- other versions on request

IP67



#### flange: 75x75; fixing center 60x60

16	3	3132-4TT	3132-6TT	3132-9TT
16	4	3142-4TT	3142-9TT	3142-6TT
16	5	3152-4TT	3152-9TT	3152-6TT
32	3	3232-4TT	3232-6TT	3232-9TT
32	4	3242-4TT	3242-9TT	3242-6TT
32	5	3252-4TT	3252-9TT	3252-6TT

### Flanged socket straight IP67 TT

TURBO TERMINAL<sup>clicks</sup>

- screwless connection technology
- other versions on request

IP67



#### flange: 100x100; fixing center 80x80

63	3	333-4	333-6	333-9
63	4	334-4	334-9	334-6
63	5	335-4	335-9	335-6

### Flanged socket straight IP66/67 POWER TWIST

POWER TWIST

- with lamellar contact
- to order with pilot contact please add a "5" e.g.: 3355-6
- other versions on request

IP66/67



#### flange: 120x120; fixing center 100x100

125	3	343-4	343-6	343-9
125	4	344-4	344-9	344-6
125	5	345-4	345-9	345-6

# CEE Sockets

Amp.	Poles	110V~	230V~	400V~
		50/60Hz <b>4h</b>	50/60Hz 3p=6h 4p+5p=9h	50/60Hz 3p=9h 4p+5p=6h

## Flanged sockets sloping IP44

- with screw terminals
- other versions on request

**IP44**  
**IP44/IP54** (16A 3p, 16A 5p, 32A 5p)



flange: 80x97; fixing center 60x73

16	3	413-4f8	<b>413-6f8</b>	413-9f8
16	4	414-4f8	414-9f8	<b>414-6f8</b>
16	5	415-4	415-9	<b>415-6</b>
32	3	423-4	<b>423-6</b>	423-9
32	4	424-4	424-9	<b>424-6</b>
32	5	425-4	425-9	<b>425-6</b>

## Flanged sockets sloping IP44

- TT**
- screwless connection technology
  - other versions on request

**IP44**  
**IP44/IP54** (16A 3p, 16A 5p, 32A 5p)



flange: 80x97; fixing center 60x73

16	3	413-4TTf8	<b>413-6TTf8</b>	413-9TTf8
16	4	414-4TTf8	414-9TTf8	<b>414-6TTf8</b>
16	5	415-4TT	415-9TT	<b>415-6TT</b>
32	3	423-4TT	<b>423-6TT</b>	423-9TT
32	4	424-4TT	424-9TT	<b>424-6TT</b>
32	5	425-4TT	425-9TT	<b>425-6TT</b>

## Flanged sockets sloping IP67

- with screw terminals
- other versions on request

**IP67**



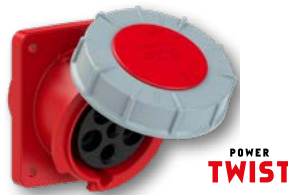
flange: 80x97; fixing center 60x73

16	3	4132-4f8	<b>4132-6f8</b>	4132-9f8
16	4	4142-4f8	4142-9f8	<b>4142-6f8</b>
16	5	4152-4f78	4152-9f78	<b>4152-6f78</b>
32	3	4232-4f78	<b>4232-6f78</b>	4232-9f78
32	4	4242-4f78	4242-9f78	<b>4242-6f78</b>
32	5	4252-4f78	4252-9f78	<b>4252-6f78</b>

## Flanged sockets sloping IP67

- POWER TWIST**
- contact frame with screws
  - other versions on request

**IP66/67**



flange: 100x112; fixing center 80x88

63	3	433-4	<b>433-6</b>	433-9
63	4	434-4	434-9	<b>434-6</b>
63	5	435-4	435-9	<b>435-6</b>

flange: 120x130; fixing center 100x108

125	3	443-4	<b>443-6</b>	443-9
125	4	444-4	444-9	<b>444-6</b>
125	5	445-4	445-9	<b>445-6</b>

# Motor protection plugs

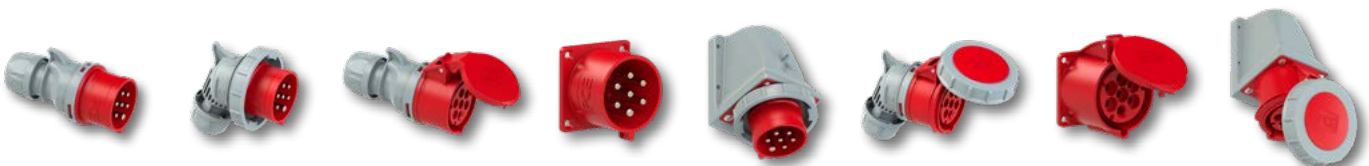


## Fields of application:

- Pumps:** Submerged pumps, mobile pumping, pumps for construction sites,...
- Agitators:** Mobile machines for mixing (building site machines)
- Blowers:** Ventilators, space ventilation,...
- Compressors:** Breathing air compressors, mobile compressors,...
- Conveyors:** Rolling and chain conveyors, band-conveyors,...
- Construction machines:** Circular saws, hand tools,...
- Extractions:** ventilation, smoke extraction,...
- Industrial motors**



# CEE plugs and sockets 7-pole 16A and 32A, IP44/54 and IP66/67





## Rubber plugs and connectors

**TAURUS<sup>2</sup>**  
Der Schutzkontaktstecker

**2x8 COLOR-VARIATIONS**



- Austrian/German system
- with dual earthing system (Austrian/German and French/Belgian system)

### Plug IP54



**0511-sr**  
**0521-sr**



**0512-sr**  
**0522-sr**

### Angled plug IP44



**05811-s**



**05812-s**

**TAURUS<sup>2</sup>**  
Der Schutzkontaktstecker

### Connector IP20



**2510-sr**



**2520-sr**

- Austrian/German system
- Austrian/German system with shutter
- French/Belgian system
- French/Belgian system with shutter

**2510-src**

**2410-sr**

**2410-src**

### Connector IP54

with cap



**2511-sr**

**2511-src**

**2411-sr**

**2411-src**



**2521-sr**

with hinged lid



**2512-sr**

**2512-src**

**2412-srw**

**2412-srcw**



**2522-sr**

**TOP TAURUS<sup>2</sup>**  
Der Schutzkontaktstecker

**LED** Connectors optionally with voltage indicator



### Plug IP54



**05721-sr**

### Connector IP20



**25710-sr**

**25710-src**

**25730-sr**

**25730-src**

### Connector IP54

with cap



**25711-sr**

**24711-sr**

**25711-src**

**24711-src**

**25731-sr**

**24731-sr**

**25731-src**

**24731-src**

with hinged lid



**25712-sr**

**24712-sr**

**25712-src**

**24712-src**

**25732-sr**

**24732-sr**

**25732-src**

**24732-src**

- with dual earthing system (Austrian/German and French/Belg. system)
- Austrian/German system
- French/Belgian system
- with shutter (Austrian/German system)
- with shutter (French/Belg. system)
- with LED indicator (Austrian/German system)
- with LED indicator (French/Belg. system)
- with shutter and LED (Austrian/German system)
- with shutter and LED (French/Belg. system)

### 2-way connector IP44

with hinged lid



**25212-r**

**25212-rc**

**24212-r**

**24212-rc**

### 3-way connector IP44

with cap



**25311-s**

**25311-sc**

**24311-s**

**24311-sc**

Rubber  
(insert: polyamide)

**25311-s5**

with 5-pole terminal

**24311-s5**

**24311-sc5**

- Austrian/German system
- Austrian/German system with shutter
- French/Belgian system
- French/Belgian system with shutter

### 3-way connector IP44

with hinged lid



Solid rubber  
(insert: rubber)

**253622-s**

**253622-s5**

with 5-pole terminal



**253642-s**

- Austrian/German system
- Austrian/German system with shutter
- French/Belgian system
- French/Belgian system with shutter

# Socket outlets

## Watertight plug and connector IP66/68

### NAUTILUS<sup>®</sup>

also available in bronze-green

- dual-point earthing system (Austrian/German and French/Belgian system)
- Austrian/German system
- French/Belgian system



**Plug IP66/68**  
with protection cap

**20051-b**



**Connector IP66/68**  
with cap

without shutter

**20251-b**  
**20241-b**

with shutter

**20251-bc**  
**20241-bc**

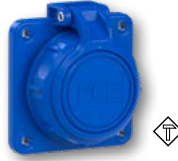
### NAUTILUS<sup>®</sup>

## Watertight socket outlet IP66/68

- 16A, 3p (2p+E) with screw terminals
- rear connection
- also available in bronze-green

- Austrian/German system with shutter

- French/Belgian system with shutter



Flange 75x75mm  
4-point fastening  
with hinged lid

**20352-8b**  
**20352-8bc**

**20342-8b**  
**20342-8bc**



Flange 75x75mm  
4-point fastening  
with cover band

**20351-8b**  
**20351-8bc**

**20341-8b**  
**20341-8bc**



Flange oval  
2-point fastening  
with cover band

**20351-9b**  
**20351-9bc**

**20341-9b**  
**20341-9bc**

## Socket outlet IP20

- 16A, 3p (2p+E) with screw terminals
- side connection
- with shutter



Austrian/German system  
DIN 49440

**10584-0wsc**

French/Belgian system

**10484-0wsc**

## Socket outlet IP54

- 16A, 3p (2p+E), flange 50x50mm

screw terminals	screwless connection technology	side connection	rear connection	shutter	sealing bulge*	Austrian/German system DIN 49440		French/Belgian system	
●		●				<b>1050-0bs</b>	<b>105-0bs</b>	<b>1040-0bs</b>	<b>104-0bs</b>
●		●		●		<b>1050-0bsc</b>	<b>105-0bsc</b>	<b>1040-0bsc</b>	<b>104-0bsc</b>
●			●			<b>1050-0b</b>	<b>105-0b</b>	<b>1040-0b</b>	<b>104-0b</b>
●			●	●		<b>1050-0bc</b>	<b>105-0bc</b>	<b>1040-0bc</b>	<b>104-0bc</b>
●			●		●	<b>1050-0bw</b>	<b>105-0bw</b>		
	●		●				<b>109-0b</b>		<b>108-0b</b>
	●		●	●			<b>109-0bc</b>		<b>108-0bc</b>
	●		●		●		<b>109-0bw</b>		

\* Plugs and socket outlets (DIN 49440) for portable use are subject to the standard DIN VDE 0620-1:2010 and ÖVE/ÖNORM EA 8684-2-2:2010

Further colours for S-NOVA:

## Flanged socket

- conforming to Italian, Danish, English, Australian and Swiss system
- Flange 50x50mm
- with screw terminals



**Italian standard IP54**

**1036-0s**



**Danish standard IP44**

**1030-0b**



**English standard IP54**

**1020-5s**



**Australian standard IP54**

**1037-0s**



**Swiss standard IP54**

**1313-0bc (T13)**  
**1323-0bc (T23)**

Amp.	Poles	24V~	42V~	24/42V~	24/42V~	24/42V~	24/42V~	24/42V=
		50/60Hz without Minor key	50/60Hz 12h	100-200Hz 4h	300Hz 2h	400Hz 3h	401-500Hz 11h	DC 10h
		Cat.No.	Cat.No.	Cat.No.	Cat.No.	Cat.No.	Cat.No.	Cat.No.

## Extra-low voltage

### Plug IP44 TWIST

- with screw terminals
- nickel-plated contacts
- with Twist cable gland

IP44



### Plug IP67 TWIST

- with screw terminals
- nickel-plated contacts
- with Twist cable gland

IP67



### Connector IP44 TWIST

- with screw terminals
- nickel-plated contacts
- with Twist cable gland

IP44



### Connector IP67 TWIST

- with screw terminals
- nickel-plated contacts
- with Twist cable gland

IP67



flange: 70x70; fixing center 56x56

### Flanged socket straight IP44/54

- with screw terminals
- nickel-plated contacts

IP44/54



flange: 54x60; fixing center 44x44

### Flanged socket straight IP66/67

- with screw terminals
- nickel-plated contacts

IP66/67



### Wall socket IP44

- with screw terminals
- nickel-plated contacts
- top (M25) and rear entry

IP44



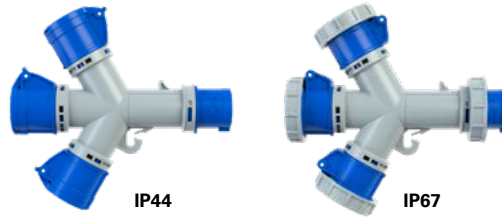
other versions and flange sizes on request!

# Multiple-sockets outlet and adaptors

## Multiple-socket outlet

**Entry:** 1 CEE-plug 16A 3p 230V  
**Outlet:** 3 CEE-sockets 16A 3p 230V

- nickel-plated contacts
- other versions on request

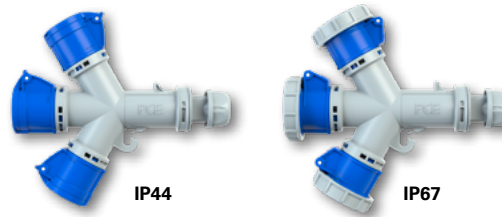


Amp.	Poles	Cat.No.	protection degree
16	3	9432000*	IP44
16	3	9432001*	IP67

## Multiple-socket outlet with cable gland

**Entry:** 1 Twist cable gland  
**Outlet:** 3 CEE-sockets 16A 3p 230V

- nickel-plated contacts
- other versions on request



16	3	9432006	IP44
16	3	9432007	IP67

## Adapter - CEE-plug 16A 3p / socket

**Entry:** 1 CEE-plug 16A 3p 230V  
**Outlet:** 1 socket (DIN 49440) 16A 250V

- available also with French/Belgian, Danish and British sockets
- nickel-plated contacts



16	3	9433100*	IP44
----	---	----------	------

## Adapter - CEE-plug 16A 5p / socket

**Entry:** 1 CEE-Plug 16A 5p 400V  
**Outlet:** 1 socket (DIN 49440) 16A 250V

- available also with French/Belgian, Danish and British sockets
- nickel-plated contacts



16	5	9433020*	IP44
----	---	----------	------

## Multi-Adapter

### CEE-plug 16A 3p / Italian socket outlet for domestic use

**Entry:** 1 CEE-plug 16A 3p 230V  
**Outlet:** 2 italian socket outlets P17/11  
 1 italian socket outlet P30/17



16	3	9433170*	IP20
----	---	----------	------

\* Export version (in Austria and Germany not allowed!) - other versions on request

## Data socket with CAT 6<sub>A</sub> RJ45 module

- housing material: PA6, colour: yellow
- incl. rubber seal with cable entry
- IP54 splashproof (lid closed)
- CAT 6<sub>A</sub> Keystone module, shielded, RJ45 to LSA stripes, tool free cable installation, colour coded acc. to EIA/TIA 568 A&B



Data socket with hinged lid (2x opening)  
**incl. 2xCAT 6<sub>A</sub> RJ45 module**

**12k452-0e**

IP54

Data socket with hinged lid (1x opening)  
 empty (without module)

**11om-0e**

IP54

Module CAT 6<sub>A</sub> RJ45

**093617**

## Surface outlet with data socket

- Surface data socket 2xLAN with hinged lid
- 2x Cat 6A RJ45 Modul
- M25 cable gland (double 7mm)
- IP54 (lid closed without cable inserted cable)



white

**86312k452**

IP54

Amp.	Poles	230V~	400V~
		50/60Hz 3p=6h 4p+5p=9h	50/60Hz 3p=9h 4p+5p=6h
		Cat.No.	Cat.No.
16	3	013-6x	014-6x 015-6x
16	4		
16	5		
32	3	023-6x	024-6x 025-6x
32	4		
32	5		

## Event technology

### CEE Plug IP44 SHARK

- with screw terminals
- to order screwless connection technology please add "TT" e.g. 013-6TTx



IP44

### Solid rubber plug

- with screwless cable gland
- dual-point earthing system
- insert: rubber



IP54 **TOP TAURUS** 05721-ss

63	3	033-6xs	034-6xs 035-6xs
63	4		
63	5		
125	3	043-6xs	044-6xs 045-6xs
125	4		
125	5		

### CEE Plug IP66/67 POWER TWIST

- Contact frame with screws



IP66/67

### Solid rubber connector

- with screwless cable gland
- national
- with hinged lid
- insert: rubber



IP54 **TOP TAURUS** 25712-ss

16	3	613-6x	614-6x 615-6x
16	4		
16	5		
32	3	623-6x	624-6x 625-6x
32	4		
32	5		

### CEE Flanged plug straight IP44

- with screw terminals
- to order screwless connection technology please add "TT" e.g. 613-6TTx



IP44

### 3-way connector - solid rubber

- with screwless cable gland
- national
- with hinged lid
- insert: rubber



IP44 253622-sxs  
with LED 253642-sxs

16	3	213-6x	214-6x 215-6x
16	4		
16	5		
32	3	223-6x	224-6x 225-6x
32	4		
32	5		

### CEE Connector IP44 SHARK

- with screw terminals
- to order screwless connection technology please add "TT" e.g. 213-6TTx



IP44

### T-Connect

- Equipment:  
1 CEE-plug 16A 3p 6h  
1 CEE-socket 16A 3p 6h  
1 cable entry



IP44 (IP67 available)  
other versions on request 94325000

63	3	233-6xs	234-6xs 235-6xs
63	4		
63	5		
125	3	243-6xs	244-6xs 245-6xs
125	4		
125	5		

### CEE Connector IP66/67 POWER TWIST

- Contact frame with screws



IP66/67

### Hinged windows

- available in different dimensions



IP67, IP54

16	3	313-6x	314-6x 315-6x
16	4		
16	5		
32	3	323-6x	324-6x 325-6x
32	4		
32	5		

### CEE Flanged socket straight IP44

- with screw terminals
- to order screwless connection technology please add "TT" e.g. 313-6TTx



IP44

### Wall and mobile distribution boxes - solid rubber

- many designs available on request



16	5	0153-6x 0253-6x
32	5	
16	5	0153-6TTx 0253-6TTx
32	5	

### CEE Plug IP44/54 GRIP Midnight

- with screw terminals
- screwless connection technology



### Socket outlet (DIN 49440)

- 2p+E, 16A 250V
- flange 50x50mm
- fixing center 38x38mm
- screwed contact
- available also with French/Belg. and British system



IP54

1050-0s  
1050-0sw with sealing bulge



# Switched interlocked sockets

## Switched interlocked socket - Compact series

- with screw terminals
- housing material: PA6
- nickel-plated contacts
- mechanical interlock

IP44/54



Amp.	Poles	110V~	230V~	400V~	380V~
		50/60Hz 4h	50/60Hz 3p=6h 4p+5p=9h	50/60Hz 3p=9h 4p+5p=6h	50Hz 3h Container
		Cat.No.	Cat.No.	Cat.No.	Cat.No.
16	3	6013-4	<b>6013-6</b>	6013-9	
16	4	6014-4	6014-9	<b>6014-6</b>	
16	5	6015-4	6015-9	<b>6015-6</b>	
32	3	6023-4	<b>6023-6</b>	6023-9	
32	4	6024-4	6024-9	<b>6024-6</b>	
32	5	6025-4	6025-9	<b>6025-6</b>	

## Switched interlocked socket - Compact series

- with screw terminals
- housing material: PA6
- nickel-plated contacts
- mechanical interlock

IP67



16	3	60132-4	<b>60132-6</b>	60132-9	
16	4	60142-4	60142-9	<b>60142-6</b>	
16	5	60152-4	60152-9	<b>60152-6</b>	
32	3	60232-4	<b>60232-6</b>	60232-9	
32	4	60242-4	60242-9	<b>60242-6</b>	60242-3
32	5	60252-4	60252-9	<b>60252-6</b>	

## Switched interlocked socket - Compact series

- with screw terminals
- housing material: PA6 + PC/ABS
- nickel-plated contacts
- mechanical interlock
- rear entry

IP44/54



16	3	6113-4	<b>6113-6</b>	6113-9	
16	4	6114-4	6114-9	<b>6114-6</b>	
16	5	6115-4	6115-9	<b>6115-6</b>	
32	3	6123-4	<b>6123-6</b>	6123-9	
32	4	6124-4	6124-9	<b>6124-6</b>	
32	5	6125-4	6125-9	<b>6125-6</b>	

## Switched interlocked socket - Compact series

- with screw terminals
- housing material: PA6 + PC/ABS
- nickel-plated contacts
- mechanical interlock
- rear entry

IP67



16	3	61132-4	<b>61132-6</b>	61132-9	
16	4	61142-4	61142-9	<b>61142-6</b>	
16	5	61152-4	61152-9	<b>61152-6</b>	
32	3	61232-4	<b>61232-6</b>	61232-9	
32	4	61242-4	61242-9	<b>61242-6</b>	61242-3
32	5	61252-4	61252-9	<b>61252-6</b>	

## Switched interlocked socket

- with screw terminals
- housing material: PC/ABS
- nickel-plated contacts
- mechanical interlock
- top, bottom or rear entry

IP44/54



16	3	7513-4	<b>7513-6</b>	7513-9	
16	4	7514-4	7514-9	<b>7514-6</b>	
16	5	7515-4	7515-9	<b>7515-6</b>	
32	3	7523-4	<b>7523-6</b>	7523-9	
32	4	7524-4	7524-9	<b>7524-6</b>	
32	5	7525-4	7525-9	<b>7525-6</b>	

## Switched interlocked socket

- with screw terminals
- housing material: PC/ABS
- nickel-plated contacts
- mechanical interlock
- top, bottom or rear entry

IP66/67



16	3	75132-4	<b>75132-6</b>	75132-9	
16	4	75142-4	75142-9	<b>75142-6</b>	
16	5	75152-4	75152-9	<b>75152-6</b>	
32	3	75232-4	<b>75232-6</b>	75232-9	
32	4	75242-4	75242-9	<b>75242-6</b>	75242-3
32	5	75252-4	75252-9	<b>75252-6</b>	



75242-3

## Switched interlocked socket

- with screw terminals
- housing material: PC/ABS
- brass with lamellar contact CuBe
- mechanical interlock
- top, bottom or rear entry
- housing can be rotated by 180°

IP66/67



63	3	75332-4	<b>75332-6</b>	75332-9	
63	4	75342-4	75342-9	<b>75342-6</b>	
63	5	75352-4	75352-9	<b>75352-6</b>	

## Switched interlocked socket

- WxHxT = 520x222x155mm
- with screw terminals
- housing material: PC/ABS
- brass with lamellar contact CuBe
- mechanical interlock
- top entry

IP67



125	3	9755090	<b>9755102</b>	9755091	
125	4	9755095	9755096	<b>9755099</b>	
125	5	9755104	9755105	<b>9755100</b>	

## CEE diagnostic plug with LED display

The practical helper for all electricians in industry, craft and on construction sites! **IP20**

Multiple display- and diagnostic functions:

- Rotary field check
- Phase conductor check
- Neutral conductor check
- Protective earth conductor check

16A CEE plug with LED display (16A 5p 6h 400V)  
32A CEE plug with LED display (32A 5p 6h 400V)

Cat.No.

**9434152**  
**9434252**



Only for temporary testing period allowed! (not for permanent use)

## CEE current measurement plug

Rotation field check (optional), **IP44**

### 16A (L1-L2-L3)

- Current measurement: L1 / L2 / L3 with clamp meter\*

without rotation field check  
with rotation field check

### 32A (L1-L2-L3-N-PE)

- Current measurement: L1 / L2 / L3 / N / PE with clamp meter\*

without rotation field check  
with rotation field check

\*Clamp meter not included.  
Only for temporary testing!

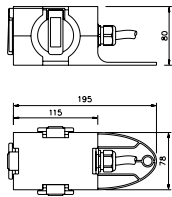
Cat.No.

**9434150**  
**9434151**



## Compact distribution boxes - Series ST. ANTON

- compact shape made of shock-resistant polyamide
- space saving storage- ergonomic design
- with shackle
- ready wired for connection
- IP44 splashproof
- well adapted for industry.



**Outlet:**



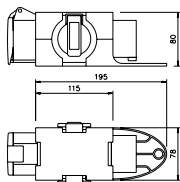
3 sockets (DIN 49440)  
16A 250V  
with self-closing lid

**Entry:**

M20 cable gland without cable  
1,5m cable H07RN-F 3G1,5  
with rubber plug 16A 250V  
1,5m cable H07RN-F 5G1,5  
with CEE-plug 16A 5p 400V  
1 CEE-plug 16A 5p 400V

Cat.No.

**9430406**  
**9430409**  
**9430429**  
**9430412**



**Outlet:**



1 CEE-plug 16A 5p 400V  
2 sockets (DIN 49440)  
16A 250V  
with self-closing lid

**Entry:**

1 CEE-plug 16A 5p 400V  
1 CEE-phase inverter 16A 5p 400V  
1,5m cable H07RN-F 5G1,5  
with CEE-plug 16A 5p 400V  
1,5m cable H07RN-F 5G1,5  
with CEE-phase inverter 16A 5p 400V

Cat.No.

**9430402**  
**9430452**  
**9430715**  
**9430719**



### Series ST. ANTON 4f

**Outlet:**



3 CEE-sockets 32A 5p 6h 400V

**Entry:**

1,5m cable H07RN-F 5G4  
with CEE-plug 32A 5p 6h 400V  
1 CEE-plug 32A 5p 6h 400V  
1,5m cable H07RN-F 5G4  
with CEE-phase inverter 400V  
1 CEE-phase inverter 32A 5p

Cat.No.

**9437113**  
**9437413**  
**9437114**  
**9437454**



## Compact distribution boxes - Series ST. ANTON 6F

- up to 6 sockets (flanged plug or cable + 5 sockets)
- optional: 4 modules under window
- optional: meter, timer or switches (e.g. emergency stop)

**Outlet:**

**Protection:**

**Connection:**

Cat.No.

1 CEE-socket 16A 5p 400V  
2 sockets (DIN 49440) 16A 250V

1 x MCB 16A 3p-C  
1 x MCB 16A 1p-C

2m cable H07RN-F 5G6  
with CEE-plug 32A 5p 6h 400V

**9439006**

5 CEE-sockets 32A 5p 400V

without protection

1 CEE-flanged plug 32A 5p 400V

**9438413**

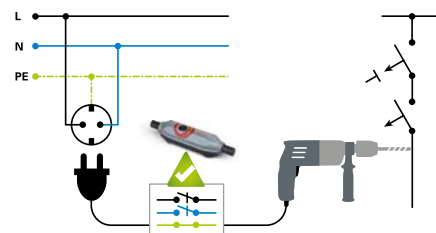


# PRCD-S+ Mobile personal protection devices



PCE's **PRCD-S+** protects the user reliably against incorrect electrical installations

- Before every switch-on procedure and during operation a fully automatic verification is performed in order to check the correct supply conditions. The classic "test button" is eliminated.
- Measuring errors are indicated by the signal unit flashing red. In this case, the **PRCD-S+** from PCE gives a visual warning and does not switch on.
- The LED signal unit (red/green) visualizes error situations and offers a permanent status indication.
- The PE conductor circuit is switched on in advance and switched off with a delay.
- Failure situations like external voltage on the PE conductor or fault current above rated values cause an interruption of L and N. The PE conductor stays closed and keeps being monitored!
- Overvoltage will be detected - the **PRCD-S+** switches off or cannot be switched on.
- Undervoltage will be recognized and the **PRCD-S+** switches off.
- The **PRCD-S+** recognises conductor interruptions or wiring errors from the source system.



**Cat.No.**

**967011355**

## **PRCD-S+ Mobile personal protection device**

- for direct use inline with connection cords
- Cable inline version **PRCD-S+** 16A 30mA IP55

**4670001**

## **PRCD-S+ Safety extension cord IP44**

- 3m H07RN-F 3G1,5
- with mobile personal protection device **PRCD-S+** 16A 230V~ 30mA
- mounted rubber safety plug and rubber safety connector 16A 250V~

**4670002**

## **PRCD-S+ Safety extension cord with 3-way connector IP44**

- 3m H07RN-F 3G1,5
- with mobile personal protection device **PRCD-S+** 16A 230V~ 30mA
- mounted rubber safety plug and rubber 3-way connector 16A 250V~



**9250027**

## **PRCD-S+ Safety cable reel XREEL® 250**

- 25m H07RN-F 3G1,5
- 3x safety sockets (individually replaceable) with sealing bulge and self closing hinged lid 16A 250V, thermo protection switch and rubber safety plug (dual earthing system).
- Including mobile personal protection device **PRCD-S+** 16A 250V~ 30mA, IP44



**9350001**

## **PRCD-S+ Safety cable reel XREEL® 310**

- 40m H07RN-F 3G2,5
- 4x safety sockets (individually replaceable) with sealing bulge and self closing hinged lid 16A 250V, thermo protection switch, power indicator light and rubber safety plug (dual earthing system).
- Including mobile personal protection device **PRCD-S+** 16A 250V~ 30mA, IP44



**000256**

## **Carrying case for PRCD-S+**

Robust, stackable carrying case made of polypropylen for perfect storage and carrying of your **PRCD-S+** safety device or any other equipment.  
outside dimensions: 388 x 388 x 110 mm (WxHxD)  
inside dimensions: 370 x 295 x 100 mm (WxHxD)



## Work lights - mobile

### PCE mini LED

Power/Voltage: 30W / 220-240V~ (50-60Hz)  
 Lighting current/Luminous colour: 3800 lm / 4000 Kelvin  
 Dimensions: (WxHxD): 213 x 410 x 145mm  
 Cable: 5m H07RN-F 3G1,5 with safety plug  
 Housing / colour: 2-component plastic/rubber, red-black  
 IP rating: **IP54**   
 Incl. switch (ON/OFF) and additional safety socket with lid on the side.

Cat.No.

**4303020**



**3800**  
Lumen




**4303025**

### PCE mini LED safety

with rechargeable battery for emergency light function, approx. 90 minutes

### PCE standard LED

Power/Voltage: 50W / 220-240V~ (50-60Hz)  
 Lighting current: 4600 lm / luminous color 4000 Kelvin  
 Dimensions: (WxHxD): 285 x 440 x 135mm  
 Cable: 5m H07RN-F 3G1,5 with safety plug  
 Housing / color: 2-component plastic/rubber, red-black  
 IP-rating: **IP54**   
 Incl. switch (ON/OFF) and additional safety socket (max. 3kW) with lid on the side.

**4305020**




**4600**  
Lumen



**4305025**

### PCE standard LED safety

### PCE maxi LED

Power/Voltage: 75W / 220-240V~ (50-60Hz)  
 Lighting current/Luminous colour: approx. 7500 lm / 4000 Kelvin  
 Dimensions: (WxHxD): 378 x 505 x 165mm  
 Cable: 5m H07RN-F 3G1,5 with safety plug  
 Housing / colour: 2-component plastic/rubber, red-black  
 IP rating: **IP54**   
 Incl. 2 pcs. safety socket with lid (backside) and ON/OFF switch.

**4307520**



**7270**  
Lumen



**4307525**

### PCE maxi LED safety

with rechargeable battery for emergency light function, approx. 60 minutes

### LED-Hand lamp PCE Akku LED 200

5+1 Ultra High Power LED (SMD)

Lamp: 5+1 Ultra High Power LED (SMD)  
 200 Lumen (lamp),  
 100 Lumen (flashlight)  
 Battery: Lithium-ion 3,7 V- 1100 mAh  
 Operating time: approx. 2,75 hours (lamp)  
 approx. 5,5 hours (flashlight mode)  
 Charging time: approx. 3 hours  
 IP rating: IP54

**730010**

**Inclusive accessories:**



Charging adapter:  
 IN: 100-240V AC 50/60 Hz  
 OUT: 5V / 500mA (USB)



Micro car charger:  
 12-24V DC



USB-cable

**200**  
Lumen



**100**  
Lumen

### LED-Hand lamp PCE Akku LED 500

10+1 Ultra High Power LED (SMD)

Lamp: 500 Lumen (lamp)  
 120 Lumen (flashlight)  
 Battery: Lithium-Ionen 3,7 V- 4400 mAh  
 Operating time: approx. 4,5 h (lamp)  
 approx. 17 h (flashlight mode)  
 Charging time: approx. 3,5 h  
 IP rating: IP54

**740010**

**Inclusive accessories:**



Charging adapter:  
 IN: 100-240V AC 50/60 Hz  
 OUT: 5V / 1000mA (USB)



Micro car charger:  
 12-24V DC



USB-cable

**500**  
Lumen



**120**  
Lumen

# XREEL® Cable reel

## Cable reel made of special plastics

Stable carrying rack with ergonomic handle made of extremely durable plastic, central brake mechanism as well as 2 parking positions for the plug. Available in 2 dimensions.



## XREEL® 250



### Equipment:

- 4 x safety sockets with shutter 16A 250V
- Thermal protection, power indicator light and safety plug (rubber) with dual earthing system

■ cable color black    ■ cable color orange

IP20

Cable type	Cable length	Cat.No.
<b>H05RR-F 3G1,5</b> Rubber sheathed cable ■	25m	<b>9250005-p</b>
<b>H05VV-F 3G1,5</b> PVC-sheathed cable ■	25m	<b>9250002-p</b>



### Equipment:

- 4 x safety sockets with shutter, sealing bulge and self closing hinged lid 16A 250V
- Thermal protection, power indicator light and safety plug (rubber) with dual earthing system

IP54

Cable type	Cable length	Cat.No.
<b>H05RR-F 3G1,5</b> Rubber sheathed cable ■	25m	<b>9250006-p</b>
<b>H05VV-F 3G1,5</b> PVC-sheathed cable ■	25m	<b>9250004-p</b>
<b>H05RR-F 3G1,5</b> Rubber sheathed cable ■	25m	<b>9250007-p*</b>



### Equipment:

- 3 x safety sockets (individual exchangeable), sealing bulge and self closing hinged lid 16A 250V
- Thermal protection and safety plug (solid rubber) with dual earthing system

IP54

Cable type	Cable length	Cat.No.
<b>H07RN-F 3G1,5</b> Rubber sheathed cable K2 ■	25m	<b>9250012-p</b> ⚡
<b>H07RN-F 3G1,5</b> Rubber sheathed cable K2 ■	33m	<b>9250022-p</b> ⚡
<b>H05RR-F 3G2,5</b> Rubber sheathed cable K2 ■	25m	<b>9250034-p</b> ⚡
<b>H05RR-F 3G1,5</b> Rubber sheathed cable ■	25m	<b>9250001-p*</b>
<b>H07BQ-F 3G1,5</b> Polyurethane cable K2 ■	25m	<b>9250010-p</b> ⚡
<b>H07BQ-F 3G1,5</b> Polyurethane cable K2 ■	30m	<b>9250033-p</b> ⚡
<b>H07BQ-F 3G1,5</b> Polyurethane cable K2 ■	33m	<b>9250026-p</b> ⚡
<b>H07BQ-F 3G2,5</b> Polyurethane cable K2 ■	25m	<b>9250018-p</b> ⚡

### Empty reel

with crank, cable entry and strain relief



Description	Best.Nr.
<b>Empty reel</b> (without central panel), colour: black	<b>9250998-p</b>
<b>Central panel 4xSSD</b> 4x safety socket IP54 incl. thermal protection and operation display, ready wired on main terminal	<b>925004</b>
<b>Central panel 3xSSD</b> 3x safety socket IP54 individually replaceable, incl. thermal protection, ready wired on main terminal	<b>925006</b>

Equipment samples (other versions on request!)

\*French/Belgian system with shutter

## XREEL® 310

### Equipment:

- 4 x safety sockets (individual exchangeable), sealing bulge and self closing hinged lid 16A 250V
- Thermal protection, power indicator light and safety plug (solid rubber) with dual earthing system

■ cable color black ■ cable color orange

IP54

Cable type	Cable length	Cat.No.
H07BQ-F 3G1,5 Polyurethane cable K2	25m	9350145-p
H07BQ-F 3G1,5 Polyurethane cable K2	30m	9350147-p
H07BQ-F 3G1,5 Polyurethane cable K2	40m	9350146-p
H07BQ-F 3G1,5 Polyurethane cable K2	50m	9350151-p
H07BQ-F 3G2,5 Polyurethane cable K2	25m	9350159-p
H07BQ-F 3G2,5 Polyurethane cable K2	30m	9350196-p
H07BQ-F 3G2,5 Polyurethane cable K2	40m	9350162-p
H07BQ-F 3G2,5 Polyurethane cable K2	50m	9350009-p
H07RN-F 3G1,5 Rubber sheated cable K2	25m	9350150-p
H07RN-F 3G1,5 Rubber sheated cable K2	30m	9350132-p
H07RN-F 3G1,5 Rubber sheated cable K2	40m	9350015-p
H07RN-F 3G1,5 Rubber sheated cable K2	50m	9350160-p
H07RN-F 3G2,5 Rubber sheated cable K2	25m	9350142-p
H07RN-F 3G2,5 Rubber sheated cable K2	30m	9350167-p
H07RN-F 3G2,5 Rubber sheated cable K2	40m	9350202-p
H07RN-F 3G2,5 Rubber sheated cable K2	40m	9350025-p*
H07RN-F 3G2,5 Rubber sheated cable K2	50m	9350163-p



Cable type	Cat.No.
Empty reel 310 with central panel, 4x safety sockets with hinged lids, thermal protection and power indicator light, ready wired on main terminal, colour: black (without cable and plug) ■	8935097-p

### Equipment:

- 1 x CEE socket 16A 5p 6h 400V
- 3 x safety sockets (individual exchangeable), sealing bulge and self closing hinged lid 16A 250V
- Thermal protection and CEE-plug 16A 5p 400V

IP54

Cable type	Cable length	Cat.No.
H07BQ-F 5G2,5 Polyurethane cable K2	25m	9350189-p
H07BQ-F 5G2,5 Polyurethane cable K2	30m	9350008-p
H07RN-F 5G2,5 Rubber sheated cable K2	25m	9350235-p
H07RN-F 5G2,5 Rubber sheated cable K2	33m	9350042-p



Kabeltype	Best.Nr.
Empty reel 310 with central panel, 4x safety sockets with hinged lids, thermal protection and power indicator light, ready wired on main terminal, colour: black (without cable and plug) ■	8935096-p

### Equipment:

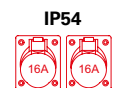
- 2 x CEE sockets 16A 5p 400V
- Thermal protection and CEE-plug 16A 5p 400V

IP54

Cable type	Cable length	Cat.No.
H07BQ-F 5G2,5 Polyurethane cable K2	30m	9350022-p
H07RN-F 5G2,5 Rubber sheated cable K2	25m	9350245-p

\*French/Belgian system with shutter

Equipment samples (other versions on request!)



## CEE extension cables 16A / 32A

- Extension cable 25m with GRIP CEE plug and CEE connector (nickel-plated contacts)
- IP-rating IP44/54

...available on stock!

Cable type	Plug/Connector	Cable length	Cat.No.
H07RN-F rubber sheated cable 5G2,5	16A 5p 400V	25m	825525114v
H07RN-F rubber sheated cable 5G6	32A 5p 400V	25m	825506214v



# Thermoplastic insulated distribution boxes - mobile

## Series IMST IP44



- Handy, robust, mobile distribution box made of shock-resistant polyamide
- Socket outlet combination acc. EN 61439 or EN 60309
- Dimensions: HxWxD = 200x197x197 mm
- Max. rated current of 32A
- Up to 7 sockets
- 8 modules under window
- Stackable
- Ready wired for connection



Layout examples: (other combinations on request!)

Layout	CEE 400V 5p		SS 250V	Protection		Connection	InA RDF	Cat.No.
	32A	16A	16A	RCD	MCB			
		2	4			1 x CEE-flanged plug 16A 5p 400V	VS max.16A	<b>9030010</b>
		2	5	1 x RCD 40A/4/0.03A (TYP A 25AT)	2 x MCB 16A 1p-C	2m cable H07RN-F 5G2,5 with plug 16A 5p 400V	InA 16A RDF 0,7	<b>9030204</b>
	1	1	3	1 x RCD 63A/4/0.03A (TYP A 40AT)	1 x MCB 16A 3p-C 1 x MCB 16A 1p-C	2m cable H07RN-F 5G4 with plug 32A 5p 400V	InA 32A RDF 0,5	<b>9030117</b>

## Series ISCHL IP44



- Handy, robust, mobile distribution box made of shock-resistant polyamide
- Socket outlet combination acc. EN 61439 or EN 60309
- Dimensions: HxWxD = 200x300x200 mm
- Max. rated current of 32A
- Up to 10 sockets (inlet plug + 8 sockets or cable with plug + 9 sockets)
- Up to 13 modules under window
- Stackable
- Ready wired for connection



Layout examples: (other combinations on request!)

Layout	CEE 400V 5p		SS 250V	Protection		Connection	InA RDF	Cat.No.
	32A	16A	16A	RCD	MCB			
		3	6			2m cable H07RN-F 5G2,5 with plug 16A 5p 400V	VS max.16A	<b>9130005</b>
		3	6	1 x RCD 40A/4/0.03A (TYP A 25AT)		2m cable H07RN-F 5G2,5 with plug 16A 5p 400V	InA 16A RDF 0,6	<b>9130006</b>
	1	2	6	1 x RCD 63A/4/0.03A (TYP A 40AT)	2 x MCB 16A 3p-C 3 x MCB 16A 1p-C	2m cable H07RN-F 5G6 with plug 32A 5p 400V	InA 32A RDF 0,6	<b>9130008</b>

## Solid-rubber distribution boxes - mobile

### Series SPITZ IP54

- Portable solid rubber distribution box
- Socket outlet combination acc. EN 61439
- Dimensions: HxWxD = 320x320x320 mm
- Fuses, control devices e.g. MCB, RCD, current indicator,... under top cover
- Lifting hinged top cover with 2 quick acting closures
- Maximum safety- closed casing bottom with high ground clearance
- Space-saving storage- distributors are stackable



Layout examples: (other combinations on request!)

Layout	CEE 400V 5p		SS 250V	Protection		Connection	InA RDF	Cat.No.
	32A	16A	16A	RCD	MCB			
	1	2	3	1 x RCD 63A/4/0,03A (TYP A 63AT)	1 x MCB 32A 3p-C 2 x MCB 16A 3p-C 3 x MCB 16A 1p-C	2m cable H07RN-F 5G16 with CEE-plug 63A 5p 400V	InA 63A RDF 0,6	<b>94741511</b>
	2	2	4	1 x RCD 63A/4/0,03A (TYP A 40AT)	1 x MCB 16A 3p-C 4 x MCB 16A 1p-C	2m cable H07RN-F 5G6 with CEE-plug 32A 5p 400V	InA 32A RDF 0,4	<b>94741386</b>

### Series RIED IP54

- Socket outlet combination acc. EN 61439
- Dimensions: HxWxD = 280x235x285 mm
- Fuses, control devices e.g. MCB, RCD, current indicator,... under top cover
- Lifting hinged top cover with 1 quick acting closure
- Maximum safety- closed casing bottom with high ground clearance
- Space-saving storage- distributors are stackable



Layout examples: (other combinations on request!)

Layout	CEE 400V 5p		SS 250V	Protection		Connection	InA RDF	Cat.No.
	32A	16A	16A	RCD	MCB			
	1	2	3	1 x RCD 63A/4/0.03A (TYP A 40AT)	1 x MCB 16A 3p-C 3 x MCB 16A 1p-C	2m cable H07RN-F 5G6 with CEE-plug 32A 5p 400V	InA 32A RDF 0,5	<b>9473080</b>
		2	4	1 x RCD 63A/4/0.03A (TYP A 40AT)	1 x MCB 16A 3p-C 2 x MCB 16A 1p-C	1xCEE-wall mounted plug 32A 5p 400V (IP44)	InA 32A RDF 0,5	<b>9473435</b>

### Series STEYREGG IP54

- Socket outlet combination acc. EN 61439 or EN 60309
- Dimensions: HxWxD = 79x430x129 mm
- With or without fuse protection
- Ready wired for use



Layout examples: (other combinations on request!)

Layout	CEE 400V 5p		SS 250V	Protection		Connection	VS InA RDF	Cat.No.
	32A	16A	16A	RCD	MCB			
		1	3	1 x RCD 40A/4/0.03A (TYP A 25AT)		2m cable H07RN-F 5G2,5 with CEE-plug 16A 5p 400V	InA 16A RDF 0,8	<b>9441051</b>
		2	3			2m cable H07RN-F 5G2,5 with CEE-plug 16A 5p 400V	VS max.16A	<b>9441151</b>

# DELTA Thermoplastic insulated distribution boxes - wall mounting

- Socket outlet combination acc. EN 61439
- Housing made of high durable PC/ABS, compact design
- Ready wired for connection
- Wall mounting is possible in- or outside the protective area.
- All outer metal parts made out of stainless steel, captive screws
- Switchgear built in under impact resistant window
- Standard version: opening for cable gland on top, blind cap on bottom
- CEE-sockets and safety sockets made of PA6, contacts nickel-plated, sockets individually exchangeable



## Series SÖLDEN IP54

- Dimensions: HxWxD = 520x297x165 mm
- up to 2x14 modules

CEE 400V 5p			SS 250V	Protection		Connection	InA RDF	Cat.No.
63A	32A	16A	16A	RCD	MCB			
	1	2	9	1x RCD 63A/4/0.03A (TYP A 63AT)	1x MCB 32A 3p-C 2x MCB 16A 3p-C 9x MCB 16A 1p-C	1x M40 (hole) top, 1x M40 (blind cap) bottom	InA 63A RDF 0,5	<b>9028883</b>
1	1	2	3	1x RCD 63A/4/0.03A (TYP A 63AT)	1x MCB 32A 3p-C 1x MCB 16A 3p-C 3x MCB 16A 1p-C	1x M40 (hole) top, 1x M40 (blind cap) bottom	InA 63A RDF 0,4	<b>9029074</b>



## Series STROBL IP54

- Dimensions: HxWxD = 520x222x140
- up to 2x10 modules

CEE 400V 5p		SS 250V	Protection		Connection	InA RDF	Cat.No.
32A	16A	16A	RCD	MCB			
1	1	3	1x RCD 63A/4/0.03A (TYP A 40AT)	1x MCB 32A 3p-C 1x MCB 16A 3p-C 3x MCB 16A 1p-C	1x M32 (hole) top, 1x M32 (blind cap) bottom	InA 40A RDF 0,6	<b>9025575</b>
1	2	4	1x RCD 63A/4/0.03A (TYP A 40AT)	1x MCB 32A 3p-C 2x MCB 16A 3p-C 4x MCB 16A 1p-C	1x M32 (hole) top, 1x M32 (blind cap) bottom	InA 40A RDF 0,4	<b>9025231</b>



## Series ANIF7 IP54

- Dimensions: HxWxD = 320x222x140 mm
- up to 10 modules

CEE 400V 5p		SS 250V	Protection		Connection	InA RDF	Cat.No.
32A	16A	16A	RCD	MCB			
	2	2		2x MCB 16A 3p-C 2x MCB 16A 1p-B	1x M32 (hole) top, 1x M32 (blind cap) bottom	InA 32A RDF 0,6	<b>9135123</b>
1	1	3	1x RCD 63A/4/0.03A (TYP A 40AT)	1x MCB 16A 3p-C 3x MCB 16A 1p-C	1x M32 cable gland (ø18-25mm) top 1x M32 (blind cap) bottom	InA 32A RDF 0,5	<b>9135510</b>



## Series LOFER7 IP54

- Dimensions: HxWxD = 255x204x140 mm
- up to 9 modules

CEE 400V 5p		SS 250V	Protection		Connection	InA RDF	Cat.No.
32A	16A	16A	RCD	MCB			
	1	2	1x RCD 40A/4/0.03A (TYP A 25AT)	1x MCB 16A 3p-C 2x MCB 16A 1p-B	1x M25 (hole) top, 1x M25 (blind cap) bottom	InA 25A RDF 0,8	<b>9018112</b>
1	1			1x MCB 16A 3p-C	1x M25 (hole) top, 1x M25 (blind cap) bottom	InA 32A RDF 0,6	<b>9018088</b>

Layout examples: (other combinations on request!)

## Solid-rubber distribution boxes - wall mounting

### Series BRUCK IP54

- Socket outlet combination acc. EN 61439
- Solid rubber enclosing with protective roof (optional without roof)
- Dimensions: HxWxD = 370x370x203 mm
- Front cover made out of plastics (black), hinged to housing
- Window for up to max. 18 modules
- Ready wired for connection

#### Standard version:

- TOP-mounting up to 17 modules - all switchgear and sockets mounted on front cover for easy fixation of the housing to the wall
- BOTTOM-mounting up to 18 modules- all switchgear mounted on the housing
- Protective insulation via 4-way wall fastening outside of wiring space
- All outer metal parts made out of stainless steel, captive screws
- Switchgear built in under impact resistant window (opening angle >180°)
- Cable gland IP68 selective on top or bottom
- CEE-sockets and safety sockets made of PA6, contacts nickel plated, sockets individually exchangeable



Layout examples: (other combinations on request!)

Layout	CEE 400V 5p			SS 250V	Protection		Connection	InA RDF	Cat.No.
	63A	32A	16A	16A	RCD	MCB			
		2	2	4	1 x RCD 63A/4/0.03A (TYP A 63AT)	2x MCB 32A 3p-C 1x MCB 16A 3p-C 4x MCB 16A 1p-B	1 x M32 (ø18-25mm) top 1 x M32 (blind cap) bottom	InA 63A RDF 0,5	<b>9240544</b>
	1	1	1	4	1 x RCD 63A/4/0.03A (TYP A 63AT)	1x MCB 32A 3p-C 1x MCB 16A 3p-C 2x MCB 16A 1p-C	1 x M40 (ø22-32mm) top 1 x M40 (blind cap) bottom	InA 63A RDF 0,4	<b>92402427</b>

### Series SALZBURG IP54

- Socket outlet combination acc. EN 61439
- Solid rubber enclosing with protective roof (optional without roof)
- Dimensions: HxWxD = 370x298x203 mm
- Front cover made out of plastics (black), hinged to housing
- Window for up to max. 14 modules
- Ready wired for connection

#### Standardausführung:

- TOP-mounting up to 13 modules - all switchgear and sockets mounted on front cover for easy fixation of the housing to the wall
- BOTTOM-mounting up to 14 modules- all switchgear mounted on the housing
- Protective insulation via 4-way wall fastening outside of wiring space
- All outer metal parts made out of stainless steel, captive screws
- Switchgear built in under impact resistant window (opening angle >180°)
- Cable gland IP68 selective on top or bottom
- CEE-sockets and safety sockets made of PA6, contacts nickel plated, sockets individually exchangeable



Layout examples: (other combinations on request!)

Layout	CEE 400V 5p			SS 250V	Protection		Connection	InA RDF	Cat.No.
	63A	32A	16A	16A	RCD	MCB			
		1	1	4		1x MCB 32A 3p-C 1x MCB 16A 3p-C 4x MCB 16A 1p-C	1 x M32 (ø18-25mm) top, 1 x M32 (blind cap) bottom	InA 40A RDF 0,5	<b>92272488</b>
		1	1	3	1x RCD 63A/4/0.03A (TYP A 40AT)	1x MCB 32A 3p-C 1x MCB 16A 3p-C 3x MCB 16A 1p-B	1 x M32 (ø18-25mm) top, 1 x M32 (blind cap) bottom	InA 40A RDF 0,6	<b>92272001</b>

# PCE

Connection  
to the future

[www.pcelectric.at](http://www.pcelectric.at)

## PC Electric GesmbH

Diesseits 145

4973 St. Martin im Innkreis

AUSTRIA

TEL +43 7751 61220

FAX +43 7751 6969

[office@pcelectric.at](mailto:office@pcelectric.at)

**09845** Vers. 08/2020 EN

For additional technical information please refer to our main catalogue, visit our website [www.pcelectric.at](http://www.pcelectric.at) or contact our salesteam!

